

Transform your home



 **ETERNIA**<sup>®</sup>  
a happy union of spaces



“ Eternia is on a mission to transform your ordinary everyday spaces into extraordinary ones that help you thrive. We want to change the way your spaces look and feel, while giving them the strongest protection from extreme weather.

This revolution is more than just world-first technologies and stunning design. We’ve broken category norms with the best-in-class warranty and regular maintenance.

Enjoy exploring the Eternia revolution in the following pages. We can’t wait to transform your home.”

- Team Eternia



# Duranium™

The Duranium™ alloy has been created for your windows by the Hindalco engineers who create parts strong enough for aerospace missions.

## Welcome to the revolution

A specially invented, extra-strength aluminium alloy that no other window in the world has.  
Meet Duranium™.

## Place of birth

India, in Hindalco's world-class metallurgy laboratory. Hindalco is the world's largest aluminium manufacturer, and the flagship company of the Aditya Birla Group.

## The Duranium™ promise

Superior strength. Stunning finish. Eternal recyclability.

### Advantages



High wind load resistance. Cyclones are no match for Duranium™.



High dent resistance



Stunning finish



Difficult to imitate, bringing you the assurance of genuine products.



Highly sustainable, since aluminium is an eternally recyclable material.



## WiWA<sup>®</sup> certified windows

Windows that are independently tested and certified to withstand extreme weather conditions as per global standards.

# WiWA<sup>®</sup>

WiWA<sup>®</sup>'s full name:  
Wind, Water and Air

WiWA<sup>®</sup>'s purpose in life: India's first rating system to help you pick the right windows for your home using an evolving scientific algorithm.

## The WiWA<sup>®</sup> promise

Heavy rains? Cyclones? Pollution? Noise? Dust?  
No problem.

### WiWA<sup>®</sup> Advantages



A WiWA<sup>®</sup> score allows you to gauge the performance of windows on three parameters:  
**wind pressure, water tightness and air permeability.**



**Helps you select a window.** For example, if you want a window that can handle cyclones, check the wind parameter.



**A scientific performance guarantee,** since our windows are independently tested and certified against global standards.

## How do you measure a WiWA<sup>®</sup> score ?

WiWA<sup>®</sup> scores are graded from 1 to 10. 10 is the highest score.





The industry's best warranty. Annual maintenance.



We'll care for your windows the way you care for what's most important to you

Windows that grow old with you, while staying young and beautiful.



12-year warranty\* on the window frames.



2-year warranty\* on all hardware components in the window (including locks, handles and rollers).

Extended warranty available.

\*T&C applied



Our Eternia Care Plan\* provides comprehensive care for your windows. Your windows will be thoroughly cleaned and polished, minor scratches will be removed and all the parts will be checked.

\*T&C applied



Meet the window like none other, with 30+ components designed by global experts.



Unique sealing to protect from noise and dust

WiWA<sup>®</sup> certified windows are tested to withstand cyclones

No termites, thanks to the aluminium alloy



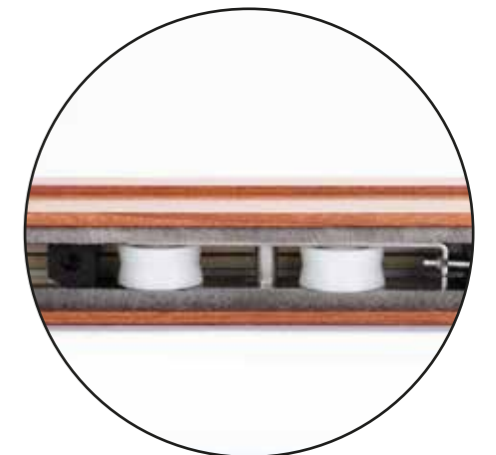
Special drainage solution to keep out heavy rains



Duranium<sup>™</sup> is difficult to imitate, bringing you the assurance of genuine products



Anti-lift plug and anti-burglary locks for extra security



Custom-engineered rollers for smooth operation



# A revolution in action

# Proud receivers of the GreenPro Ecolabel

## The WiWA<sup>®</sup> promise



Tested to keep out the heaviest rains



Keeps out extremely loud noises



Tested to protect you from cyclonic winds



Keeps out dust



Tested to prevent air leakages

## The Duranium<sup>™</sup> advantage\*



Eternally recyclable, as aluminium is a highly sustainable material



High dent resistance. Prevents your windows from getting damaged, bent or broken.



Stunning finish



Difficult to imitate, thanks to our specially invented, patented alloy



High wind-load resistance. Can easily withstand cyclonic winds

## Other benefits



An industry-first AMC service\*



Best-in-class warranty\*



Anti-lift plug and anti-burglary locks for extra security



Custom-engineered rollers for smooth operation



No termites, thanks to the aluminium alloy

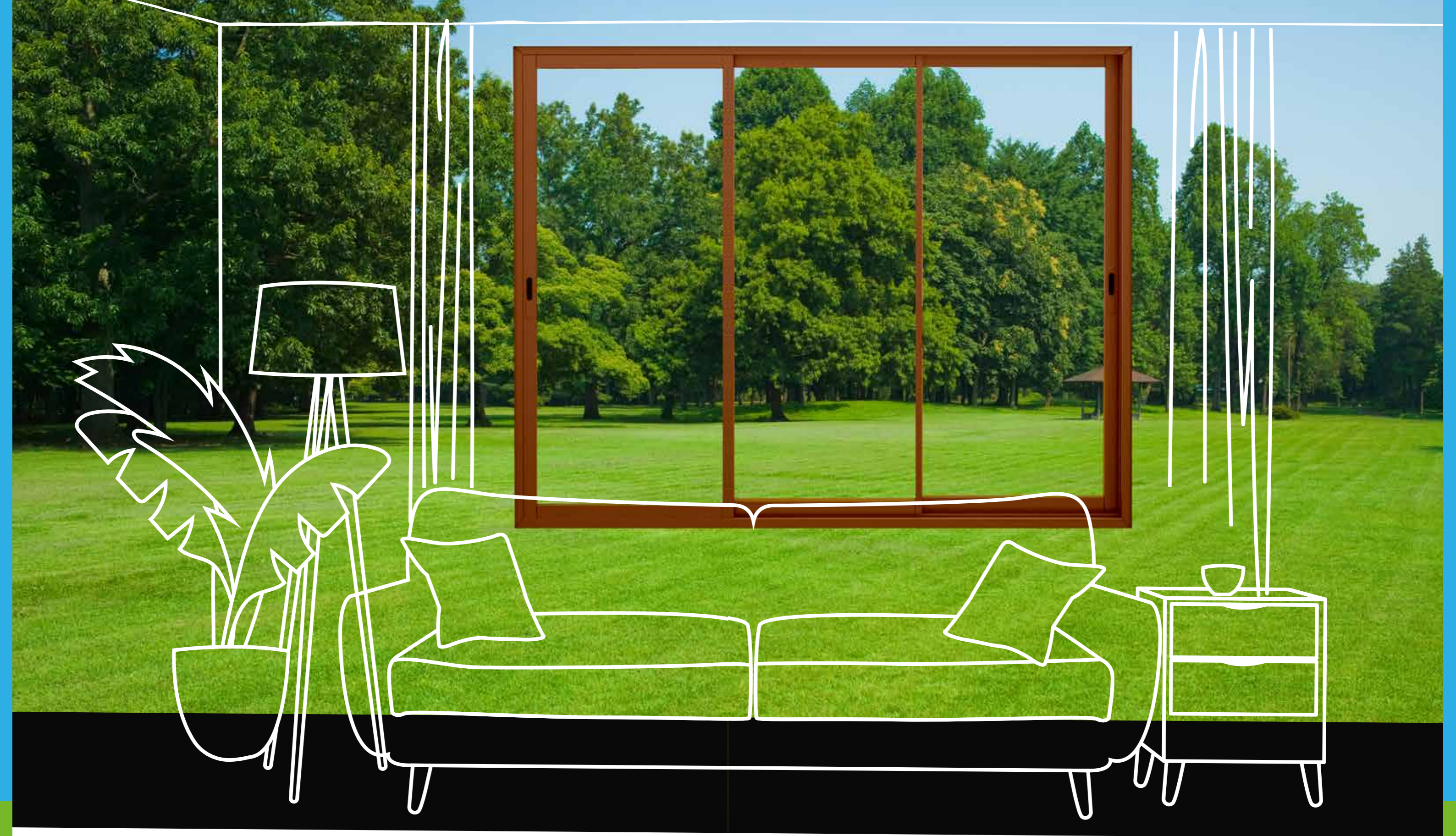


Our Eternia and Erigo windows and doors have been awarded the 'Green Products' status by GreenPro Ecolabel.

It is an international recognition of the lower environmental impact of our business activities and our contribution towards enhancing the performance of Green Buildings.

\*Not available in the Erigo range.





Explore the world of  
new-age windows and doors  
we've created just for you

Transforming your home has  
never been this simple



# Premium Sliding Doors and Windows

ETP-SD Series

Made with specially invented Duranium™ alloy for extra strength and stunning finish.

WiWA® certified for extreme weather resistance.

Slim, modern designs. Sleek aerodynamic interlock for extra strength.

Fly mesh solutions specially designed to keep out insects.

## WiWA® Score

Wind	●	10
Water	●	8
Air	●	10
Overall	●	9

## Certified as per:

Wind: Class E3000 (2.5 kpa) as per BSEN12210

Water: Class 7A (300 pa) as per BSEN12208

Air: Class 4 (600 pa) as per BSEN12207

## Handle options



Flush

D Handle

C Handle

Premium flush

Dummy handle

D Handle with key

## Product specifications (size)

Max Sash Height (mm): 3000

Glass Range (mm): 6-26

Sightline (mm): Up to 20

## Popular typologies





# Casement Doors and Windows

510C series

Extra large opening sizes to offer uninterrupted views of the world outside.

Perfect for villas, balconies, apartments and as French doors.

WiWA<sup>®</sup> certified for extreme weather resistance.

## WiWA<sup>®</sup> Score

Wind	●	10
Water	●	8
Air	●	9
Overall	●	9

## Certified as per:

Wind: Class A5 (2.0 kpa) as per BSEN12210  
Water: Class 7A (300 pa) as per BSEN12208  
Air: Class 3 (500 pa) as per BSEN12207

## Handle options



Cremone

Detachable

Double-door

Cockspur

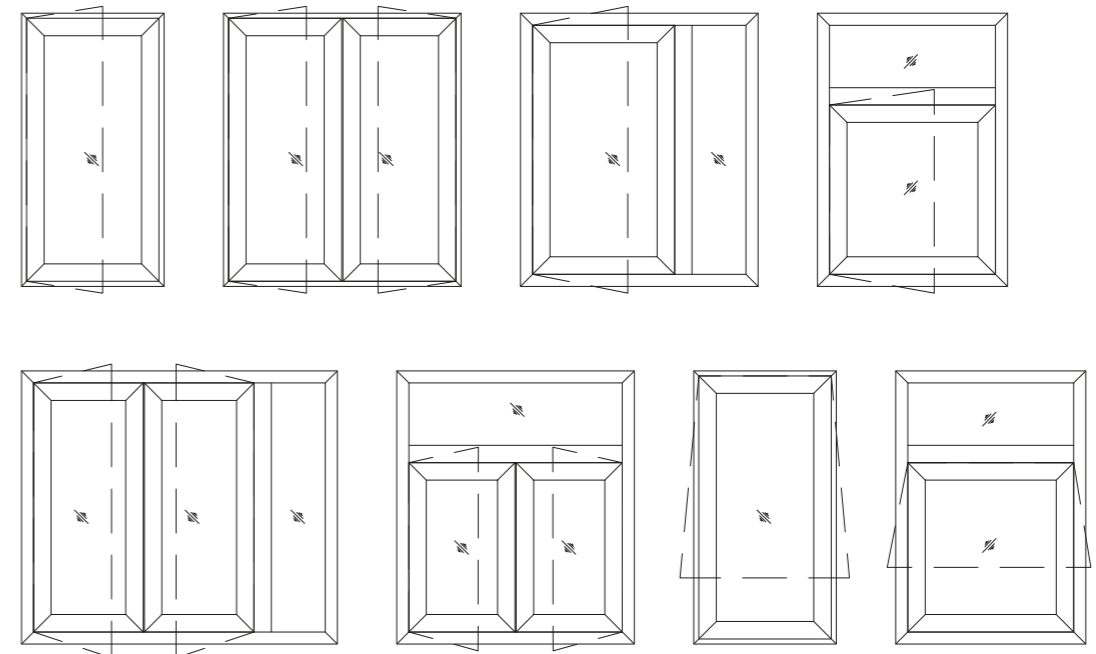
## Product specifications (size)

Max Sash Height (mm): 3000

Glass Range (mm): 6-26

Sightline (mm): 95 (frame + shutter)

## Popular typologies





# Openable Doors and Windows

ETP-CS series

Made with specially-invented Duranium™ alloy for extra strength and stunning finish.

Special security features like multipoint locking. WiWA®- certified for superior wind, water and air performance.

Ideal for large openings. Multiple typology options like open in/out, turn & tilt, pivot and swing.



## WiWA® Score

Wind	●	10
Water	●	10
Air	●	10
Overall	●	10

## Certified as per:

Wind: Class A5 (2.5 kpa) as per BSEN12210  
Water: Class E750 (750 pa) as per BSEN12208  
Air: Class 4 (600 pa) as per BSEN12207

## Handle options



Cremone



Detachable



Double-door

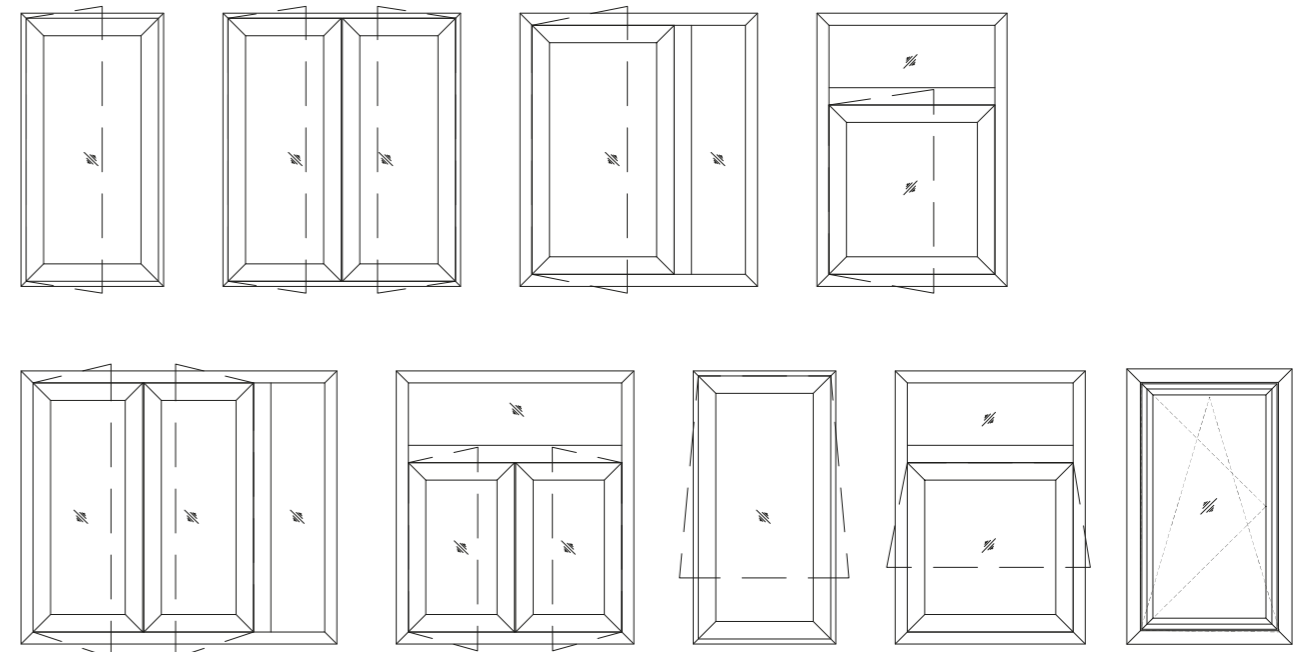


Cockspur

## Product specifications (size)

- Max Sash Height (mm): 3000
- Glass thickness (mm): 5-40
- Sightline (mm): Frame - 49, Window sash - 74, Door sash - 100

## Popular typologies

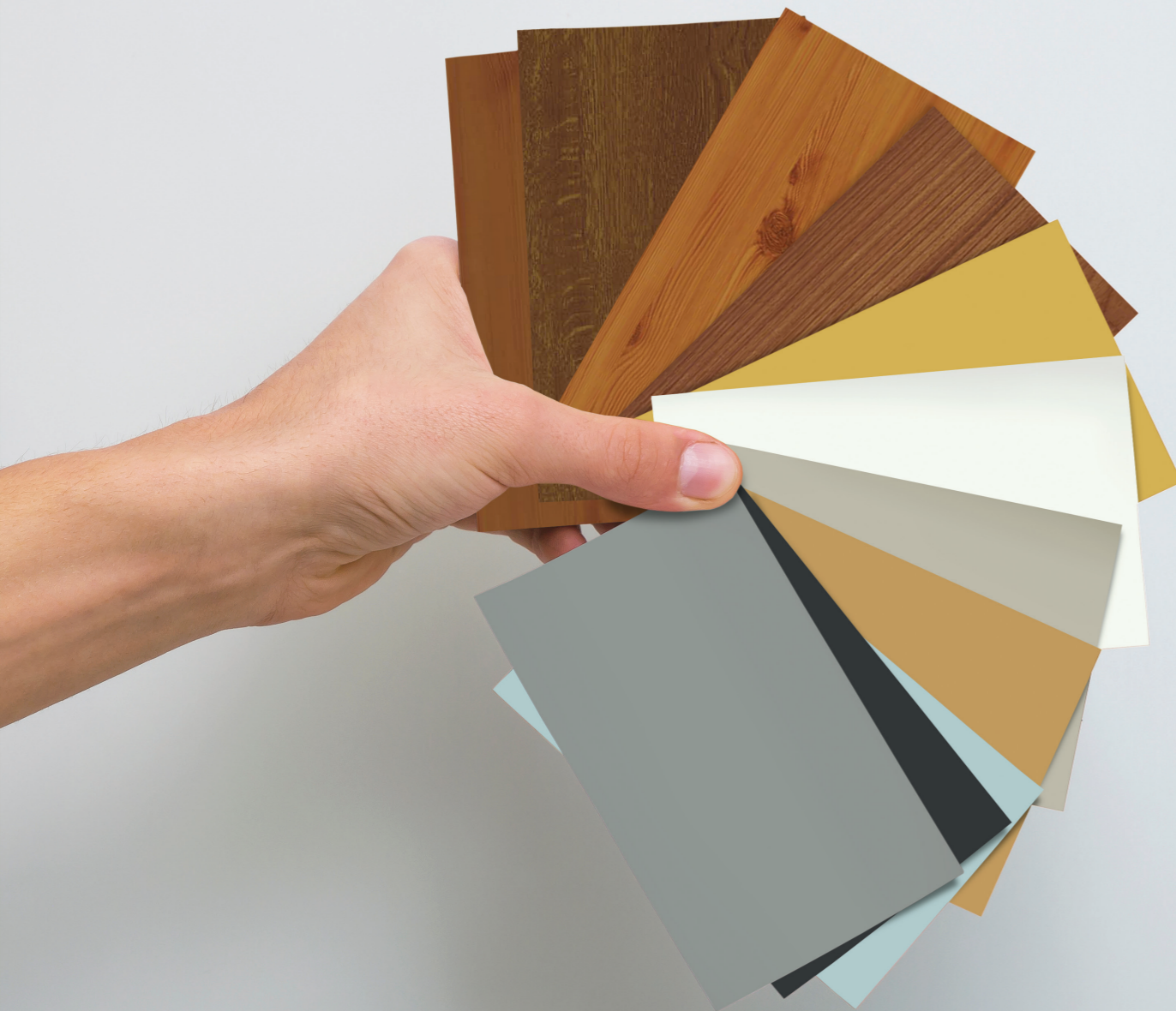




# Colours

- Wide range of colours to choose from
- Also available in wood finish

Visit your nearest dealer or contact our executive to know more about available colours.



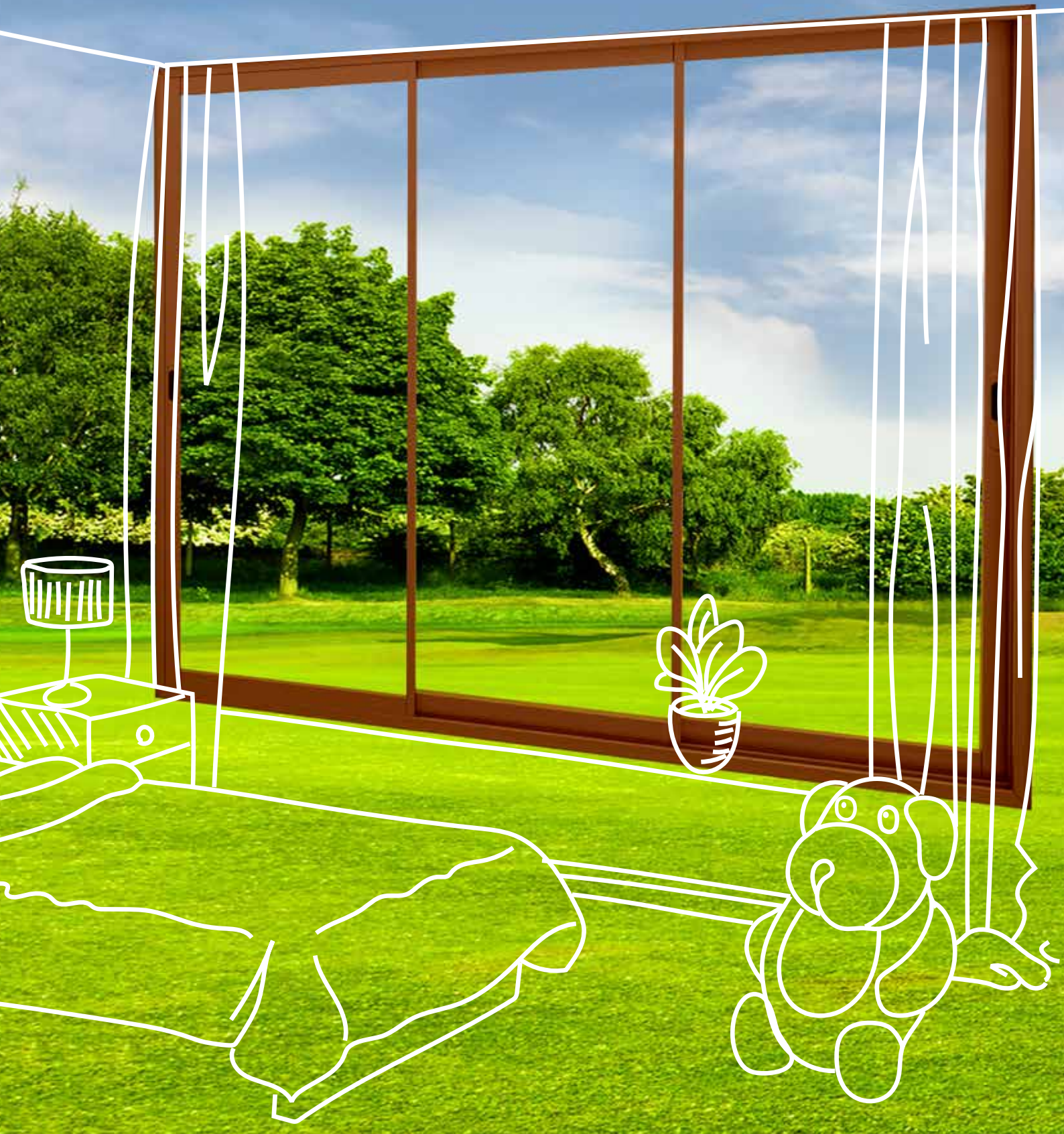
Revolutionary window technology, design and service.

This is what enables us to transform your home. For you to let the world in when you want to, and shut the world out when you need to.

Enjoy this happy union of spaces with Eternia.







## Eternia, a venture by Hindalco Industries Limited

B 03, Paragon Condominium, Building B, Ground Floor, Pandurang Budhkar Road, Worli, Mumbai 400 013  
T: +91 22 6662 6666 E: [eternia.care@adityabirla.com](mailto:eternia.care@adityabirla.com) W: [www.eterniawindows.com](http://www.eterniawindows.com)

**ETERNIA helpline number: +91 97699 40000**

"Eternia™, Erigo™, Duranium™ and WiWA® are proprietary to Hindalco Industries Limited. Hindalco Industries Limited has a patent filed right for Duranium alloy. Nothing contained here shall be construed as conferring any license or right under a Hindalco trademark, copyright or patent. Visit [www.eterniawindows.com](http://www.eterniawindows.com) for more details. Images in the brochure are indicative. Final product may be different from the images displayed.